

Why IOA

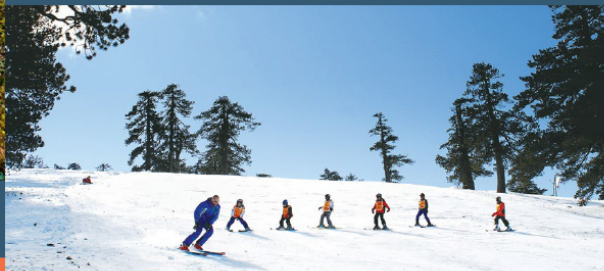
**Your gateway
to
Northwestern
Greece**



***A brief guide to
Ioannina International Airport
«King Pyrros»
(LGIO/IOA)***



Epirus region, located in the northwestern part of Greece is one of the few areas in the country offering miles of sunny beaches and enormous green mountains to explore in a time distance of just 1 hour by road. The area offers an **all-year-round** travel opportunity, with multiple activities: from swimming and diving in the deep blue waters of the Ionian Sea, to mountain trekking, rafting, skiing and discovering the virgin **Pindus Mountains**. Epirus region hides a long historical interest, starting from archeological sites and museums of the ancient era until the newer ages. A pure destination which offers an extraordinary and unique experience to every traveller*.



Ioannina city is the capital of Epirus region and the largest city of Northwestern Greece. Well known for its Lake and the picturesque islet It hides a great multicultural and multireligious history, which - alongside with the greater region - attracts thousands of tourists from different countries. Ioannina city is easily accessible by road, as it is the only city in Greece that lies in the connection of the two main highways: Egnatia and Ionian Highways. The area is of course accessible by plane through its airport, **«King Pyrrhos» Ioannina International Airport.**



*Please refer to travelioannina.com, irha.gr and php.gov.gr for more information.



Ioannina International Airport

main characteristics*



- 5Km north of Ioannina city
- Elevation 1557ft
- Runway dimensions: 2400x45m
- Runway asphalt strength: PCN 27/F/B/X/U
- Parking positions: Extended apron of 51000m² surface, hosting up to 8 medium aircraft
- Fuel provided:

JET A-1 & AVGAS (100LL) by Air BP

JET A-1 by EKO



- AIS: ATC, Meteo
- VOR/DME Approach/Departure procedures
- RNAV/GNSS Approach procedures
- Fire Category: 6 (7 or 8 available on request)
- Customs services provided
- Full terminal service facilities
- General Aviation friendly
- Handling services provided by: Aegean, Skyserv, Goldair Handling



New apron offers parking positions for over 30 light aircraft. An ideal airport for General Aviation.



*Please refer to AIP Greece for more information

Advantages of Ioannina International Airport «King Pyrrros»

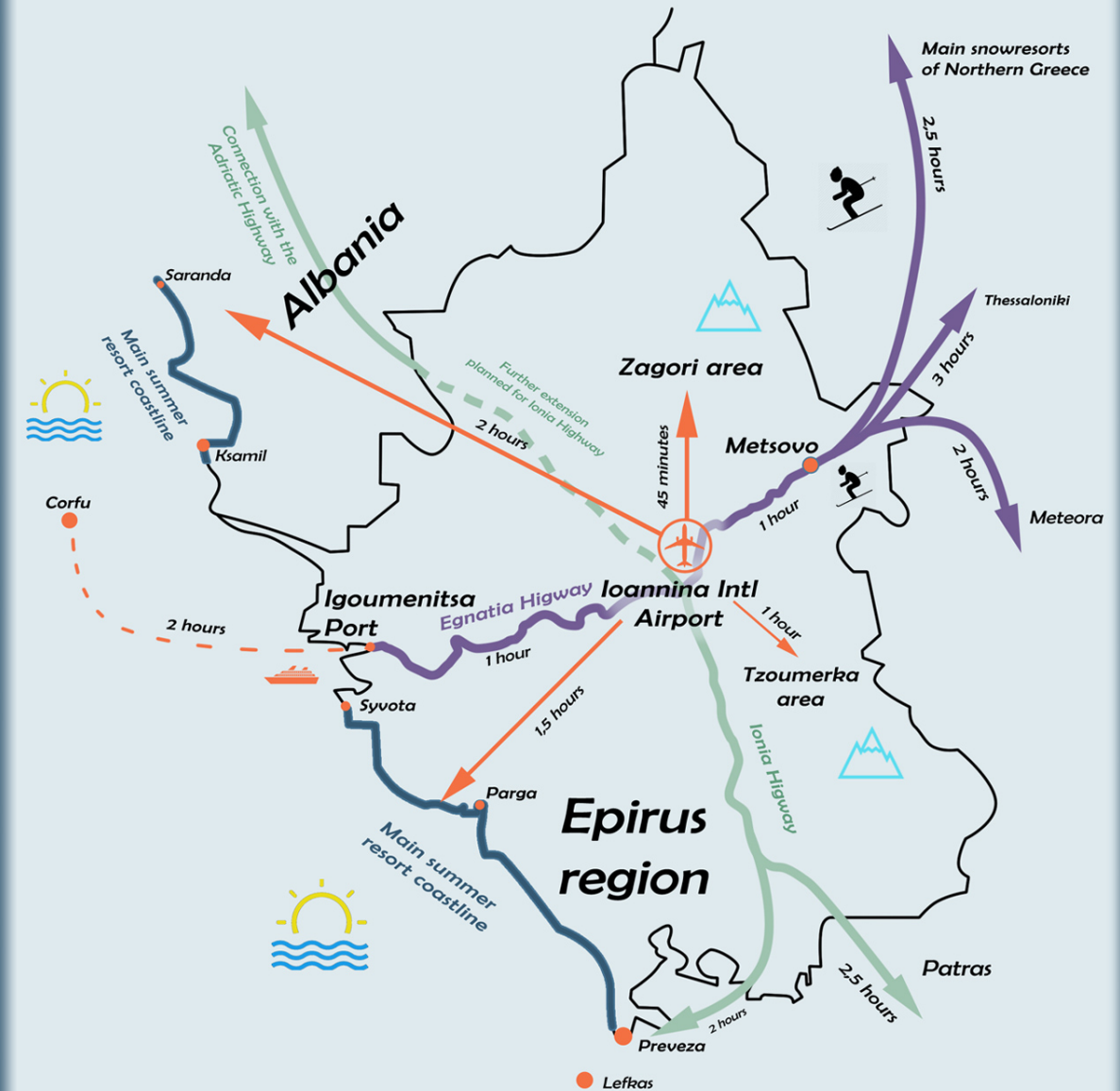
-Ioannina is the only city in Greece lying on the crossroads of the two country's main highways: **Egnatia** and **Ionian Highways**, offering to the traveller the possibility for a safe, quick and comfortable road trip to all-year-round destinations, in and out of Epirus region. Further extension of the Ionian Highway connects the area with the **Adriatic Highway**, offering a faster and easier entry to Albania and the Adriatic countries.

-The airport is connected with **Igoumenitsa port**, the largest port in Northwestern Greece, thus making it ideal for cruise tourism during the summer months.

-Ioannina airport is a hyper-regional airport, providing and entry gate to the main tourist destinations in the fast developing resorts of **South Albania**.

-As the only non-privatized operational airport in Northwestern Greece lying under HCAA rule, it offers **competitive landing and parking fees**, thus setting it friendly for **General Aviation** and ideal for **Airlines**.

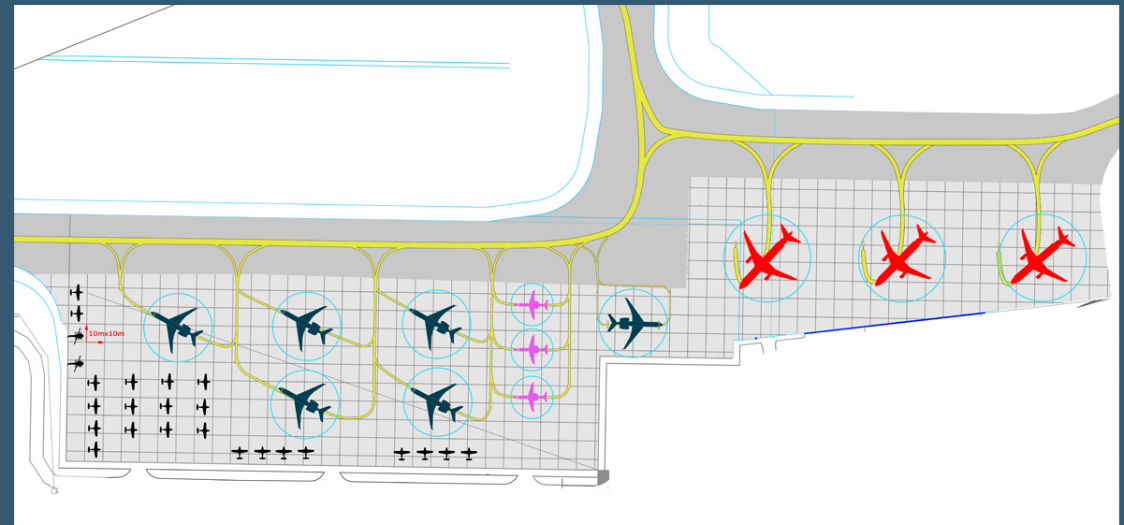
-One of the few airports in Greece with new **RNAV/GNSS Approach procedures**, allowing the aircraft to descend to a safe altitude, much lower than the standard VOR/DME approach procedures, thus reducing the flight delays and cancellations due to low clouds and visibility.



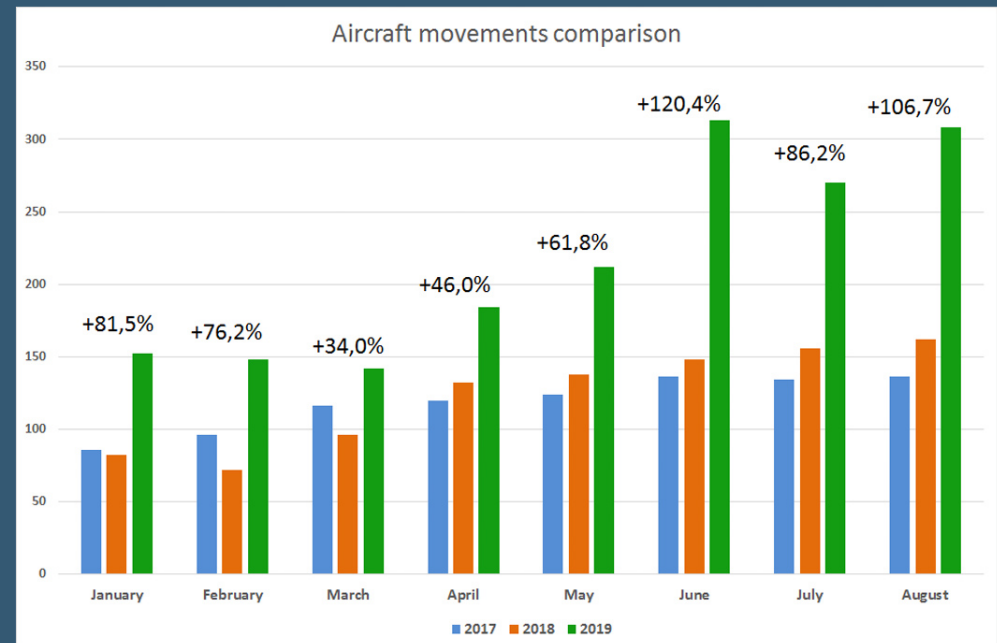
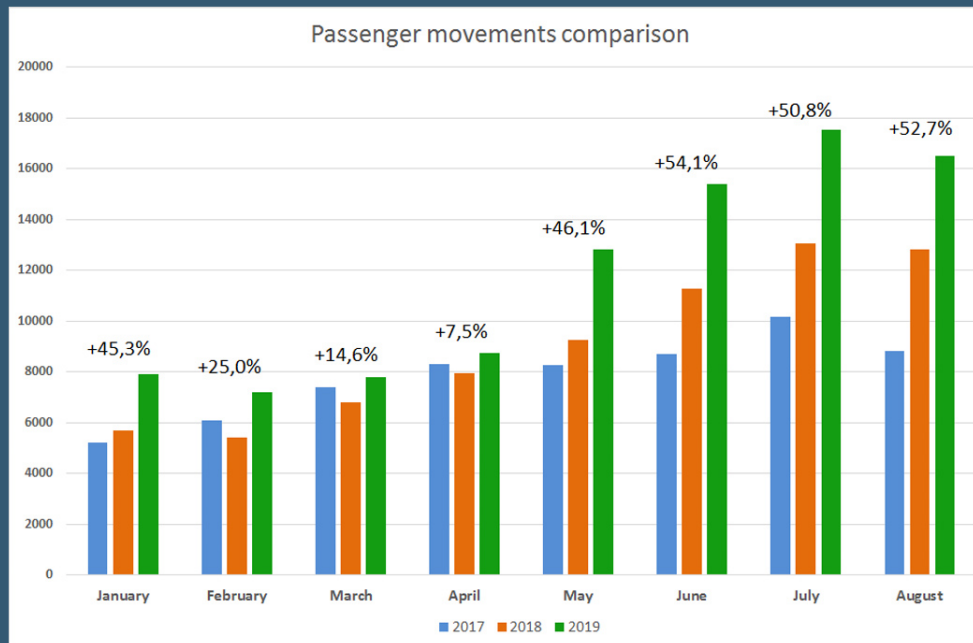
The new extended apron of a total of 51000m² offers the ability for spacious parking, both for Airlines and General Aviation / Private Jets and Helicopters. An ideal airport for fly-ins to a magical and virgin area, offering plenty of destinations for sun-and-sea and as well alternative tourism.



Offers and benefits for AOPA members in hotels, restaurants, commercial shops and activities in Ioannina region. (Visit AOPA Hellas website for more info)



Approximate parking positions for various types of aircraft



Statistic analysis for first 5 months of 2019 reveals a mean increase of 37% in passenger movements and 76,6% in aircraft movements, compared to the relative months of 2017 and 2018.

(Source HCAA)

Ioannina Intl Airport development plan

- Works on the brand new terminal building are scheduled to be complete until July 2019, offering more comfortable and spacious arrivals/departures areas, corresponding to the developing passenger needs.
- Two new free vehicle parking parks offer the ability to host up to 120 cars and 20 passenger busses, thus making the visit to/from the airport easier and more pleasant.
- The airport is connected to the city centre with Taxi services and as well, city busses. VIP transfer is also available.
- Car and minibus hire is available at Ioannina Intl Airport all-year-round, handled by the following companies:



Layout of works of the new Departures building



Airlines flying to or have visited Ioannina International Airport (indicatively):

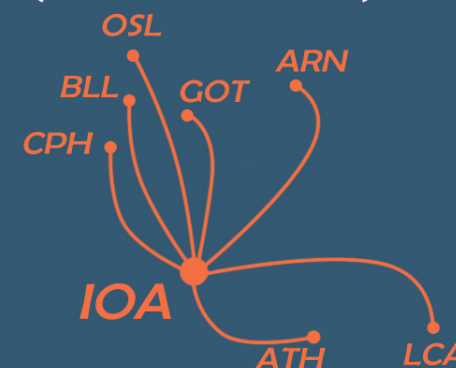
- Aegean Airlines
- Olympic Air
- TUS Air
- Sky Express
- Astra Airlines
- Small Planet
- Danish Air Transport
- Adria
- Welcome Air
- Eurofly
- Blue Panorama
- Athens Airways
- Minoan Air
- Privatair
- Cyprus Airways
- CSA
- City Airline
- Flightline
- Sun Air Scandinavia
- Travel Service
- Royal Jordanian
- Smartwings
- Islandsflug
- Viking Airlines
- Fischer Air
- Hellas Jet
- Air Slovakia
- Bulgaria Air
- GIR jet
- Cimber Air
- Sky Europe

Airlines scheduled to fly to Ioannina International Airport within 2018/2019*:



Cities connected with Ioannina Intl Airport in 2019 (scheduled or seasonal)*

- Athens (ATH)
- Stockholm (ARN)
- Göteborg (GOT)
- Copenhagen (CPH)
- Billund (BLL)
- Oslo (OSL)
- Larnaca (LCA)



*Subject to changes



Ioannina Prefecture is the largest prefecture within the Epirus Region. It offers a great scale of Hotels and Apartments, all over the area, covering multiple accomodation facilities for group travellers all-year-round.

Ioannina Prefecture hosts a total number of **222 Hotels** members of IRHA, with a dynamic of **3550 Rooms** and **7226 Beds** in categories as follows:

Category	Hotels	Rooms	Beds
★★★★★	8	650	1382
★★★★	51	545	1209
★★★	96	1237	2482
★★	59	998	1934
★	8	120	219
Total	222	3550	7226

Except for the above dynamic, Epirus coastline and as well the Saranda area offers a wide selection of hotels and appartments, mainly for sun-and-sea vacation during the summer period.



**Ioannina
Prefecture
Hotels
Association**

**Hotels
Dynamic**



Useful contact information:

Agency	Phone details	e-mail
- IOA Airport Authority 	+30 2651 083600-604-605 AFTN: LGIOYDYX	kaiop@hcaa.gr kaiopgae@hcaa.gr
- IOA Airport ATC Service 	+30 2651 083624	d18id_kaiop@hcaa.gr
- IOA Airport Police Station 	+30 2651 033365	N/A
- Aegean Airlines  	+30 2651 023201	contact@aegeanair.com
- Skyserv Handling 	+30 2651 038295 / Mob. +30 693 6093 745	ioasm@skyserv.aero
- Goldair Handling 	+30 2651 034011 / Mob. +30 698 5550 554	ioa.sm@goldair-handling.gr
- Air BP Fuel Service 	+30 2651 033948 Mob. +30 6948 603506	ioa@gissco.gr
- Ioannina Region Hotels Association 	+30 2651 041100 / Mob. +30 694 7871 026	admin@irha.gr / secretary@irha.gr
- City Taxi Service 	+30 2651 046777	N/A
Car Rental	Phone details	e-mail
- Hertz  	+30 2651 027400	ioannina@hertz.gr
- AVIS  	+30 2651 046333	avisioannina@hotmail.com
- Europcar 	+30 2651 025392 / Mob. +30 6979 001147	ioannina@genesirent.com
- SIXT 	+30 2651 078400	ioannina@sixt.gr
- Drive  	+30 2651 032988	ioannina@drive-hellas.gr
- Tomaso 	+30 26510 20000	info@tomaso.gr
- Red Fox 	Mob. +30 6945 638388	info@redfoxcarrental.gr

Ioannina LGIO/IOA International Airport Fees and Charges:

Charges applied to EU-registered aircraft with **MTOW** ≤ 5.7 tons (landing & parking fees):

MTOW (W)	Charge
≤ 2 tons	1,63€ / day
2 < W ≤ 3 tons	3,26€ / day
3 < W ≤ 5,7 tons	4,89€ / day

Charges applied to non EU-registered aircraft with **MTOW** ≤ 5.7 tons (landing & parking fees):

MTOW (W)	Charge
≤ 2 tons	7,34€ / day
2 < W ≤ 3 tons	8,15€ / day
3 < W ≤ 5,7 tons	16,30€ / day

Charges applied to aircraft MTOW over 5.7 tons (landing & parking fees):

MTOW (W)	Landing Fee*
5,7 < W ≤ 10 tons	11,50€
10 < W ≤ 25 tons	11,50€+(W × 1,1455)€
25 < W ≤ 50 tons	28,67€+(W × 1,438)€
50 < W ≤ 65 tons	64,62€+(W × 1,6141)€
65 < W ≤ 80 tons	88,83€+(W × 1,6430)€
80 < W ≤ 150 tons	113,48€+(W × 1,6141)€

* For take off/landing during night (30 mins after sunset - 30mins before sunrise as AIP) fees are increased by 40% on the above standard fee.

* During Jun, Jul, Aug, Sep between 10:00-17:00 LT fees are increased by 25% on the above standard fee.

* During Oct, Nov, Dec, Jan, Feb, Mar fees are reduced by 50% on the above standard fee.

MTOW (W)	Parking Fee*
5.7 < W ≤ 10 tons	0,2759€ x hrs
10 < W ≤ 50 tons	W x hrs x 0,0275€
50 < W ≤ 100 tons	W x hrs x 0,0344€
100 < W ≤ 200 tons	W x hrs x 0,0412€

* hrs=Total hours of parking. No fee for first 2 hours of parking.

* During Oct, Nov, Dec, Jan, Feb, Mar parking fee is reduced by 50% on the above standard fee.

Additional Fees:

Airport Development and Modernisation Charge (ADMC)*:
12,00€ / passenger travelling to/from EU, EEA countries and Switzerland.

* Except infants (under 2 years old), direct transit passengers

Passengers with reduced mobility charge:
+0,30€ / passenger



IOA ***Waits for you***

Ioannina Airport, GR45500, GREECE

Tel: +302651083600

FAX: +302651027058, +302651074192

AFTN: LGIOYDYX

email: kaiop@hcaa.gr

kaiopgae@hcaa.gr

Civil Aviation Airport Master: Mr Vasileios Mitsimaris